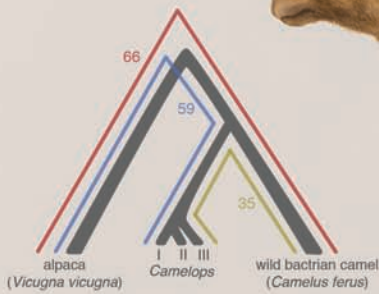
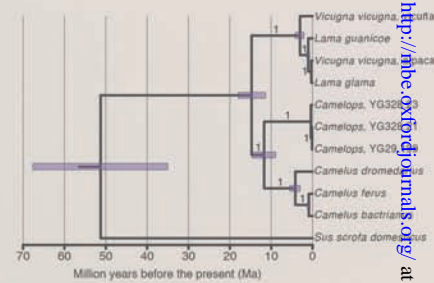
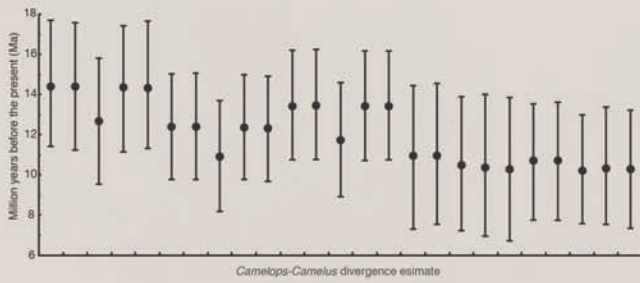


MOLECULAR BIOLOGY AND EVOLUTION

www.mbe.oxfordjournals.org



Society for Molecular Biology and Evolution

Print ISSN 0737-4038
Online ISSN 1537-1719

- Mitochondrial metagenomics for beetle phylogeny
- Genetic maps of black bear ancient migrations
- Traditional marriages affect genetic diversity
- Deleterious mutations accumulate in crops
- Phylodynamic and Phylogenomic methods

ASSOCIATE EDITORS

Joshua Akey, University of Washington, USA
Doris Bachtrog, University of California, Berkeley, USA
Miriam Barlow, University of California, Merced, USA
Juliette de Meaux, University of Münster, Germany
Anna Di Rienzo*, University of Chicago, USA
Joel Dudley, Mt. Sinai School of Medicine, USA
Daniel Falush, Max Planck Institute for Evolutionary Anthropology, Germany
Brandon Gaut*, University of California, Irvine, USA
Takashi Gojobori, National Institute of Genetics, Japan
Manolo Gouy*, Université Lyon, France
Xun Gu, Iowa State University, USA
Matthew Hahn*, Indiana University, USA
Blair Hedges*, Temple University, USA
Ryan Hernandez, University of California, San Francisco, USA
Hideki Innan, School of Advanced Sciences, Japan
David Irwin, University of Toronto, Canada
Lars Jermin, CSIRO Land and Water, Australia
Yuseob Kim, Ewha Womans University, Korea
Hongzhi Kong***, Chinese Academy of Sciences, China
Sergei Kosakovsky***, University of California, San Diego, USA
Sudhir Kumar**, Temple University, USA
Thomas Leitner***, Los Alamos National Laboratory, USA
John Logsdon, The University of Iowa, USA
Susan Masta***, Portland State University, USA
John H. McDonald, University of Delaware, USA
James McInerney, National University of Ireland, Maynooth
Aoife McLysaght, Trinity College, Ireland
Connie Mulligan***, University of Florida, Gainesville, USA
Michael Nachman, University of California, Berkeley, USA
Stuart Newfeld, Arizona State University, USA
Rasmus Nielsen, University of California, Berkeley, USA
John Novembre, University of California, Los Angeles, USA
Katja Nowick, Universität Leipzig, Germany
Todd Oakley, University of California, Santa Barbara, USA
Csaba Pal, Institute of Biochemistry, Hungary

John Parsch, University of Munich, Germany
Helen Piontkivska, Kent State University, USA
Tal Pupko, Tel Aviv University, Israel
Michael Purugganan, New York University, USA
Sohini Ramachandran, Brown University, USA
Susanne Renner***, University of Munich, Germany
Eduardo Rocha*, Institut Pasteur, France
Andrew Roger, Dalhousie University, Canada
Michael Rosenberg***, Arizona State University, USA
Claudia Russo, Federal University of Rio De Janeiro, Brazil
Ilya Ruvinsky***, University of Chicago, USA
Naruya Saitou, National Institute of Genetics, Japan
Yoko Satta, Graduate University of Advanced Studies, Japan
Beth Shapiro, The Pennsylvania State University, USA
Nicole Soranzo***, University College London, UK
Anne Stone*, Arizona State University, USA
Bing Su, Kunming Institute of Zoology, China
Willie Swanson, University of Washington, USA
Naoki Takebayashi, University of Alaska, Fairbanks, USA
Naoko Takezaki*, Kagawa University, Japan
Koichiro Tamura, Tokyo Metropolitan University, Japan
Emma Teeling, University College Dublin, Ireland
Jeffrey Thorne*, North Carolina State University, USA
Sarah Tishkoff, University of Maryland, College Park, USA
John True, Stony Brook University, USA
Nicolas Vidal, Penn State University, USA
Arndt von Haeseler*, Center for Integrative Bioinformatics, Austria
Gunter Wagner*, Yale University, USA
Claus Wilke***, University of Texas, USA
Patricia Wittkopp, University of Michigan, USA
Gregory Wray, Duke University, USA
Stephen Wright, University of Toronto, Canada
Shizhong Xu, University of California, Riverside, USA
Meredith Yeager, National Cancer Institute, USA
George Zhang*, University of Michigan, USA

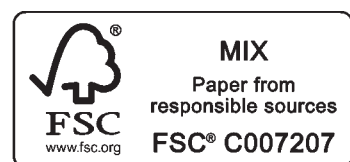
* Also a Senior Editor
** Editor-in-Chief
*** Guest Editor

Cover Art Caption: The extinct western camel of Pleistocene North America was more closely related to the Old World camels rather than the llamas and alpacas of South America. The western camel image is reproduced with permission from the copyright holders, Government of Yukon / Artist George “Rinaldino” Teichmann (1997). Artwork provided by Peter Heintzman (Volume 32-9, pp. 2433–2440)

OXFORD  OPEN

OXFORD
UNIVERSITY PRESS

Published by Oxford University Press 2015.
Published on behalf of the Society for Molecular Biology and Evolution



Genomic Data from Extinct North American *Camelops* Revise Camel Evolutionary History

Peter D. Heintzman,^{*,1} Grant D. Zazula,² James A. Cahill,¹ Alberto V. Reyes,³ Ross D.E. MacPhee,⁴ and Beth Shapiro^{1,5}

¹Department of Ecology & Evolutionary Biology, University of California Santa Cruz

²Yukon Palaeontology Program, Department of Tourism & Culture, Government of Yukon, Whitehorse, YT, Canada

³Department of Earth and Atmospheric Sciences, University of Alberta, Edmonton, AB, Canada

⁴Department of Mammalogy, Division of Vertebrate Zoology, American Museum of Natural History, New York, NY

⁵UCSC Genomics Institute, University of California Santa Cruz

*Corresponding author: E-mail: peteheintzman@gmail.com.

Associate editor: Claudia Russo

Abstract

Recent advances in paleogenomic technologies have enabled an increasingly detailed understanding of the evolutionary relationships of now-extinct mammalian taxa. However, a number of enigmatic Quaternary species have never been characterized with molecular data, often because available fossils are rare or are found in environments that are not optimal for DNA preservation. Here, we analyze paleogenomic data extracted from bones attributed to the late Pleistocene western camel, *Camelops* cf. *hesternus*, a species that was distributed across central and western North America until its extinction approximately 13,000 years ago. Despite a modal sequence length of only around 35 base pairs, we reconstructed high-coverage complete mitochondrial genomes and low-coverage partial nuclear genomes for each specimen. We find that *Camelops* is sister to African and Asian bactrian and dromedary camels, to the exclusion of South American camelids (llamas, guanacos, alpacas, and vicuñas). These results contradict previous morphology-based phylogenetic models for *Camelops*, which suggest instead a closer relationship between *Camelops* and the South American camelids. The molecular data imply a Late Miocene divergence of the *Camelops* clade from lineages that separately gave rise to the extant camels of Eurasia. Our results demonstrate the increasing capacity of modern paleogenomic methods to resolve evolutionary relationships among distantly related lineages.

Key words: paleogenomics, *Camelops*, Pleistocene, arctic, phylogeny, morphology, camel evolution.

Introduction

The western camel, *Camelops*, was the largest of the late Pleistocene North American camelids, until its extinction some 13,000 calendar years ago (13 ka), just before the end of the Pleistocene Epoch (Kooyman et al. 2012; Waters et al. 2015). Although its geographic range fluctuated, *Camelops* was widely distributed throughout western North America, from the subtropics of Honduras to the arctic latitudes of Canada (fig. 1, supplementary table S1, Supplementary Material online; Webb 1965; Webb and Perrigo 1984; Pinosof 1998; Graham and Lundelius 2010). Across this range, *Camelops* lived in a variety of habitats (Webb 1965; Zazula et al. 2011; Waters et al. 2015), where it fed on a mixed herbivorous diet of leaves, shrubs, and grasses (Zazula et al. 2011 and references therein). *Camelops* is one of the few megafaunal taxa that was demonstrably preyed upon by early humans in North America and has figured prominently in discussions of late Pleistocene megafaunal extinction (Kooyman et al. 2012; Waters et al. 2015).

Camelops was among the last surviving of the North American camels. The family Camelidae originated in North America during the Middle Eocene, approximately 46–42 Ma (Honey et al. 1998). Camelidae was taxonomically diverse,

comprising as many as 13 now-extinct genera during the Miocene (Honey et al. 1998). Paleontological and mitochondrial DNA evidence together suggest that two of its constituent major tribes diverged in North America during the late Early Miocene, about 17.5–16 Ma (supplementary fig. S1, Supplementary Material online; Honey et al. 1998; Hassanin et al. 2012). Today, one tribe, the Camelini, is represented by the Afroasian dromedary (*Camelus dromedarius*) and wild and domestic bactrian camels (*C. ferus*, *C. bactrianus*, respectively), the presumed common ancestor of which first dispersed across the then-exposed Bering Isthmus into Eurasia during the Late Miocene, 7.5–6.5 Ma (Pickford et al. 1995; Rychczynski et al. 2013). The other major tribe, the South American Auchenini, consists today of llamas (*Lama glama*), guanacos, (*L. guanicoe*), and vicuñas/alpacas (*Vicugna vicugna*) (Grubb 2005). The ancestor of these South American camelids probably dispersed into South America across the Isthmus of Panama during the Great American Biotic Interchange, perhaps just before the Pliocene/Pleistocene boundary around 2.7 Ma (Bell et al. 2004).

Satisfactory resolution of fossil camelid taxonomy and phylogeny has been impeded by rampant morphological

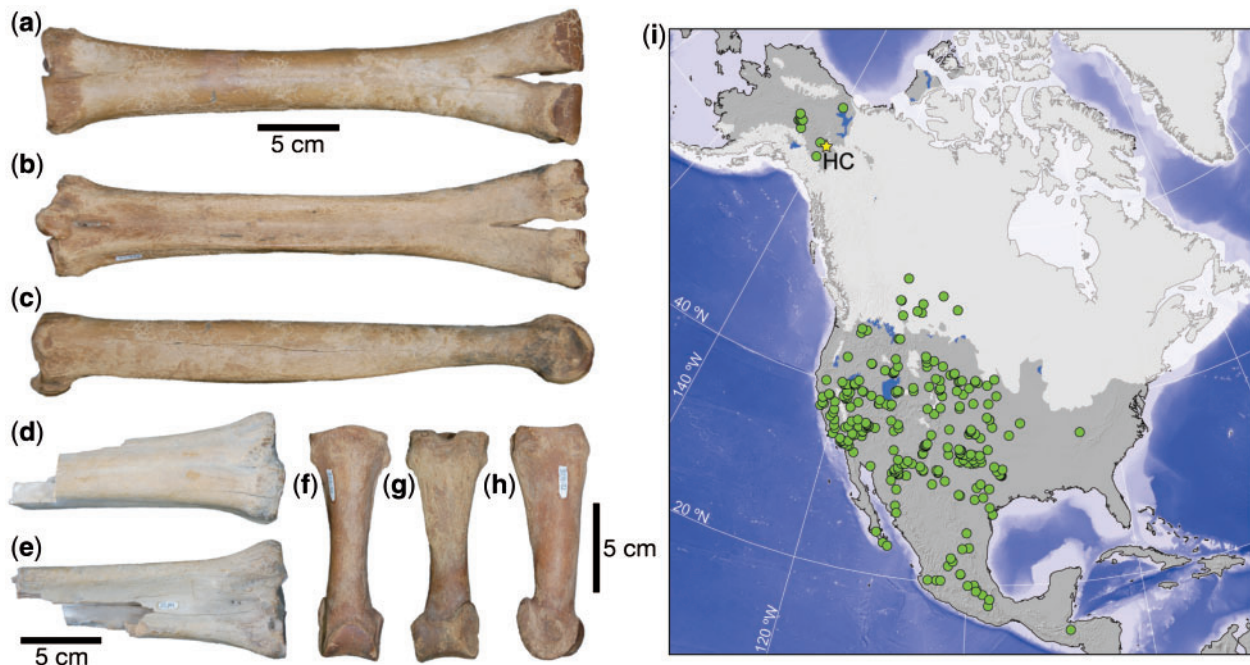


FIG. 1. The three Hunker Creek fossil specimens assigned to *Camelops* and the location of Hunker Creek in relation to other localities yielding *Camelops* specimens. YG 328.23: a complete, well-preserved left metatarsal (hindlimb cannon bone) in (a) anterior, (b) posterior, and (c) medial view. YG 29.199: a proximal fragment of a metacarpal (forelimb cannon bone) in (d) anterior, and (e) posterior view. YG 328.21: a complete and well-preserved proximal (first) phalanx or pastern bone in (f) anterior, (g) posterior, and (h) lateral view. (i) Known fossil localities of *Camelops* (circles), with late Pleistocene glacial limits and glacial lakes (white) from Ehlers et al. (2011). The Hunker Creek (HC) site is marked by a star. Locality data for *Camelops* are from the FAUNMAP database (Graham and Lundelius 2010), supplemented by additional sites from Alaska, Yukon, Mexico, and Honduras (supplementary table S1, Supplementary Material online).

parallelism, with virtually every “diagnostic” character being encountered in more than one proposed lineage (Harrison 1979; see supplementary information and supplementary fig. S1, Supplementary Material online, for an overview). Based on morphology, *Camelops* is widely recognized as a highly derived member of the Aucheniiini, probably most closely related to Late Miocene *Alforjas* (~10 to 5 Ma; Honey et al. 1998; see also Harrison 1979; Breyer 1983; Voorhies and Corner 1986; Webb and Meachen 2004, but see Scherer 2013).

It has become increasingly routine to use molecular data to test morphology-based hypotheses concerning evolutionary relationships. In particular, ancient DNA (aDNA) and fossil proteins offer the possibility of testing phylogenetic hypotheses involving both living and extinct species (e.g., Orlando et al. 2003; Lister et al. 2005; Rohland et al. 2007; Campos et al. 2010; Llamas et al. 2015; Welker et al. 2015). Here, we evaluate three *Camelops* fossils, all lower limb bones recovered from a late Pleistocene, presumably Sangamonian Interglacial (~125 to 75 ka), context in subarctic Yukon, Canada. Fossils from interglacial deposits tend to be rare at higher latitudes, at least partly because the generally acidic nature of interglacial soils is not conducive to long-term preservation of bones or biomolecules (Lindahl 1993; Muhs et al. 2001). Consequently, there have been few successful attempts to recover aDNA from fossils of subarctic and arctic interglacial faunas (but see Rohland et al. 2007) despite this interval being well within the current temporal envelope for successful aDNA characterization (Orlando et al. 2013). Using a combination of

morphological and paleogenomic analyses, we demonstrate that 1) these fossils can be assigned to *Camelops* with confidence on the basis of morphological and mensurational comparisons and that 2) *Camelops* is phylogenetically closer to *Camelus* (Camelini) than *Lama/Vicugna* (Aucheniiini). Divergence dating indicates that the lineages of *Camelops* and *Camelus* separated during the Middle to Late Miocene.

Systematic Paleontology

Classification

Class: Mammalia; Order: Artiodactyla; Family: Camelidae; Subfamily: Camelinae; Genus: *Camelops* Leidy 1854.

Fossil Locality and Age

Three specimens of *Camelops* (YG 29.199, 328.21, and 328.23) were recovered from an active placer gold mine along Hunker Creek (64.019167 N, 139.158056 W), a waterway located near Dawson City, Yukon, Canada (fig. 1). Pleistocene vertebrate fossils are commonly uncovered at these localities by hydraulic stripping of frozen sediments, during mining operations designed to gain access underlying gold-bearing gravel (Froese et al. 2009). Mining in this manner does not proceed stratigraphically, with the result that there is usually only limited information for placing individual fossils in a precise chronological context. However, the fossil assemblage that yielded these *Camelops* fossils also includes steppe-bison (*Bison priscus*), considered to be chronologically restricted to the late

Table 1. Age Data, Endogenous DNA Percentage, and Genomic Coverage Statistics for the Three Hunker Creek *Camelops* Specimens.

Specimen Number	Radiocarbon Age (¹⁴ C Year BP)	Radiocarbon Lab Number	Reads		Mitochondria		Nuclear					
			Raw	Filtered ^a	% Reads Mapped	Coverage (×) ^b	Aligned to Wild Bactrian Camel		Aligned to Alpaca			
							Reads Mapped	Coverage (×)	Reads Mapped		Coverage (×)	
									%	Per Mb	%	Per Mb
YG 328.23	> 51,700	UCIAMS 117246	33,604,352	31,930,308	0.023	23.196	20.129	3,199.0	0.149	18.789	2,761.9	0.129
YG 29.199	> 49,900	UCIAMS 72416	24,773,604	23,529,508	0.030	21.177	13.185	1,544.0	0.066	12.262	1,328.2	0.057
YG 328.21	> 51,700	UCIAMS 117244	37,783,926	35,426,303	0.029	35.653	44.647	7,872.2	0.357	41.778	6,813.7	0.310
Total			96,161,882	90,886,119								

NOTE.—The percentages of filtered reads that mapped (endogenous DNA) are reported prior to duplicate removal, whereas coverage statistics were calculated after duplicate removal. ¹⁴C year BP, radiocarbon years before the present; Mb, megabase.

^aAdapter dimers, reads with a quality score of <15 and length of <25 bp removed.

^bAs inferred from the iterative assembler.

Pleistocene (<130 ka; marine isotope stage 5/6 boundary; Lisiecki and Raymo 2005), as well as the less indicative woolly mammoth (*Mammuthus primigenius*), caribou (*Rangifer tarandus*), Dall sheep (*Ovis dalli*), and horse (*Equus* sp.). Radiocarbon dating of the camel specimens yielded nonfinite (> 50 ka) dates (table 1, but see [supplementary information, Supplementary Material](#) online). Although certainty is not possible, on paleoecological grounds (Zazula et al. 2014), we argue that the actual age of these fossils is likely to lie between roughly 130 and 75 ka, rather than to 50 ka.

Fossil Descriptions and Taxonomic Assessment

The three *Camelops* specimens (fig. 1*a–h*) all display diagnostic camelid morphology, and there can be no doubt about their familial placement. Comparison to homologous elements assigned to other fossil camelid taxa indicates that these specimens are most similar to *Camelops hesternus* ([supplementary information](#) and [dataset S1, Supplementary Material](#) online; Webb 1965; Breyer 1974; Voorhies and Corner 1986). In the absence of diagnostic cranial or dental material from this locality, however, we cannot place the Hunker Creek camel fossils unequivocally in a named species, although we provisionally designate them as *Camelops* cf. *hesternus*, following Harington (1997). The cautionary “cf.” would be unnecessary if one were to adopt Pinsof’s (1998) view that the several named species of *Camelops* are actually conspecific (as *C. hesternus*; see [supplementary information, Supplementary Material](#) online).

Results and Discussion

Characterization of *Camelops* aDNA

Genetic data recovered from the three Yukon *Camelops* specimens provided 21–35 × coverage of each mitochondrial genome and 0.07–0.36 × coverage of each nuclear genome. Endogenous DNA content ranged between 13% and 45% (table 1); molecules were very short (modal length of ~35 bp) and damaged, with between 30% and 34% of cytosines deaminated at the ends of reads ([supplementary fig. S2, Supplementary Material](#) online). The observed fragment length distributions and deamination patterns are consistent with those expected from aDNA (Dabney, Meyer, et al. 2013).

Phylogenetic Position of *Camelops* within Camelidae

Analysis of the full mitochondrial and low coverage nuclear genomes (figs. 2 and 3, [Supplementary figs. S3 and S4 and tables S2 and S3, Supplementary Material](#) online) of the three Yukon *Camelops* specimens establishes unequivocally that they are more closely related to African and Asian *Camelus* (Camelini) than to South American *Lama* and *Vicugna* (Auchenini). This contrasts with the conventional interpretation of placing *Camelops* within the Auchenini (e.g. Harrison 1979, 1985; Voorhies and Corner 1986; Wheeler 1995; Honey et al. 1998; Scherer 2013) and suggests that a wider systematic revision of fossil camelids is required.

In the mitogenomic phylogeny, the *Camelops*–*Camelus* clade is recovered with strong statistical support regardless of analytical parameters (fig. 2 and [supplementary figs. S3 and S4, Supplementary Material](#) online), with 100% posterior probability and 98–100% maximum likelihood bootstrap support in the presence of an outgroup and 94% posterior probability support in analyses lacking an outgroup ([supplementary figs. S3 and S4 and table S2, Supplementary Material](#) online). We estimated nuclear phylogenies using pairwise transversion distances to minimize the influence of damaged sites in the low-coverage paleogenomic dataset. The branching order of the resulting phylogeny was concordant with that of the mitochondrial phylogeny, regardless of whether the wild bactrian camel or alpaca was used as a reference genome for mapping the *Camelops* reads (fig. 3; [supplementary table S3, Supplementary Material](#) online). More *Camelops* reads aligned to the wild bactrian camel genome than to the alpaca genome per megabase (table 1), again suggesting that *Camelops* and *Camelus* genomes are more closely related to each other than either is to *Lama*/*Vicugna*. We also note that the branches leading to *Camelops* were shorter when the *Camelops* reads were mapped to the alpaca genome than when mapped to the wild bactrian camel genome (fig. 3*b*). This is likely due to biased recovery of increasingly conserved regions of the genome as evolutionary distance increases between the reference genome and *Camelops* (Prufer et al. 2010).

The mitochondrial and nuclear genome analyses are in slight disagreement with respect to resolved relationships

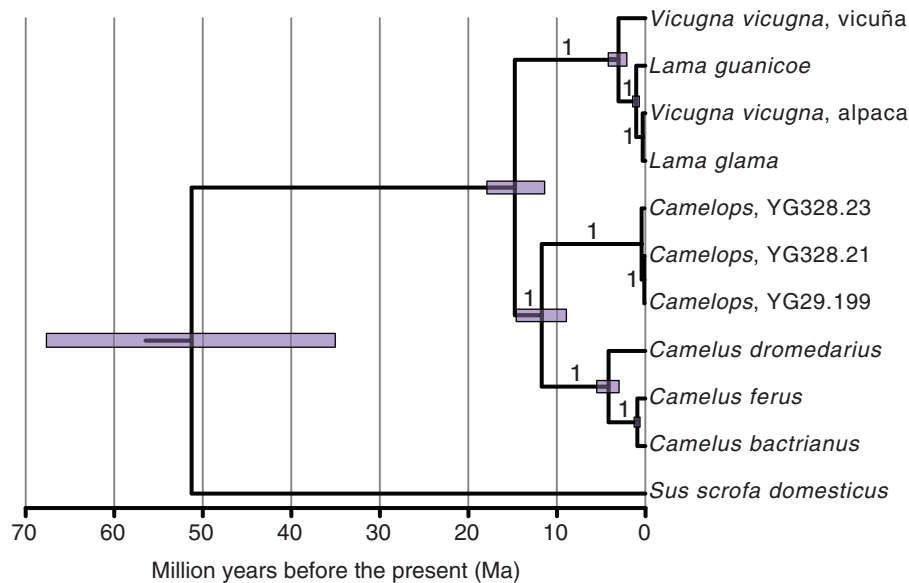


Fig. 2. Bayesian timetree of the extant Camelidae and extinct *Camelops* as inferred from whole mitogenomes. Here, a pig (*Sus scrofa domestica*) was included as outgroup and the analysis assumed a birth–death serially sampled speciation model and a median age of each *Camelops* specimen of 90,000 years. Bayesian posterior probabilities are shown along branches leading to clades for which monophyly was not enforced. Bars represent 95% highest posterior density credibility intervals for node heights.

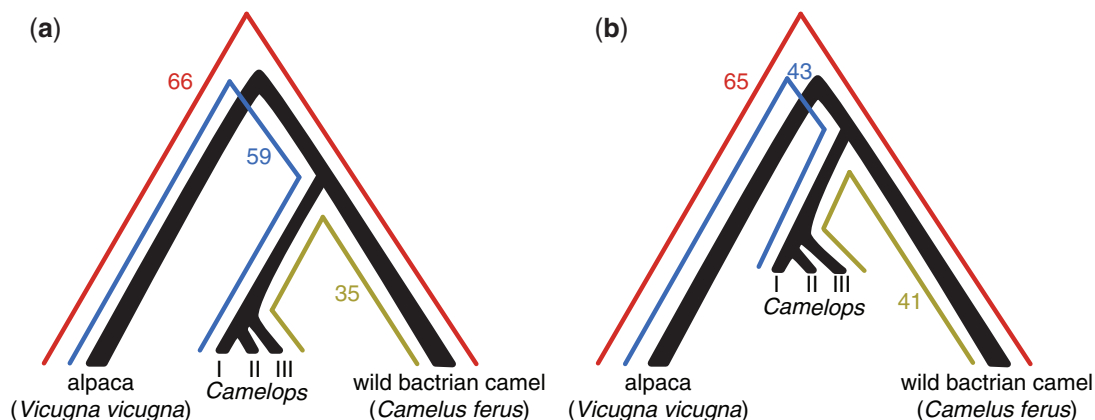


Fig. 3. Inferred phylogenetic relationships based on transversion pairwise differences between nuclear genomes of the three *Camelops* specimens, alpaca, and the wild bactrian camel, based on alignment to either the (a) wild bactrian camel or (b) alpaca reference genomes. The mean number of transversion differences per 10,000 sites are shown between wild bactrian camel–alpaca, *Camelops*–alpaca, and *Camelops*–wild bactrian camel (see also supplementary table S3, Supplementary Material online). *Camelops* specimens are I: YG 29.199, II: YG 328.23, and III: YG 328.21.

among the three *Camelops* specimens, with either YG 328.23 or YG 328.21 standing as sister to the remaining specimens, respectively (fig. 2 and supplementary figs. S3 and S4 and table S3, Supplementary Material online). This observation is consistent with a lack of lineage sorting, due to the three specimens probably having originated from the same population.

Dating the Divergence between *Camelops* and *Camelus*

Molecular clock-based analyses of the mitogenomic data from the Yukon fossils indicate that *Camelops* diverged from the lineage of Old World *Camelus* between 17.5 and 7 Ma (fig. 4; supplementary table S2, Supplementary Material online). This range spans the late Early Miocene through the

middle Late Miocene (Gradstein et al. 2012). Crucially, analyses assuming a wide range of model parameters resulted in broadly congruent results, with overlapping 95% credibility intervals. We note that the analyses that assumed a birth–death (BD) serially sampled prior resulted in noticeably younger estimates than models assuming alternate speciation priors and that the choice of outgroup also had an observable effect on the divergence estimate when calibration set one was enforced (fig. 4; supplementary table S2, Supplementary Material online). Our divergence estimates between living camel clades (supplementary table S2, Supplementary Material online) are consistent with previous ages derived from analyses of whole genomes (Wu et al. 2014) and mitochondrial sequences (Ji et al. 2009; but see supplementary information, Supplementary Material online) from extant

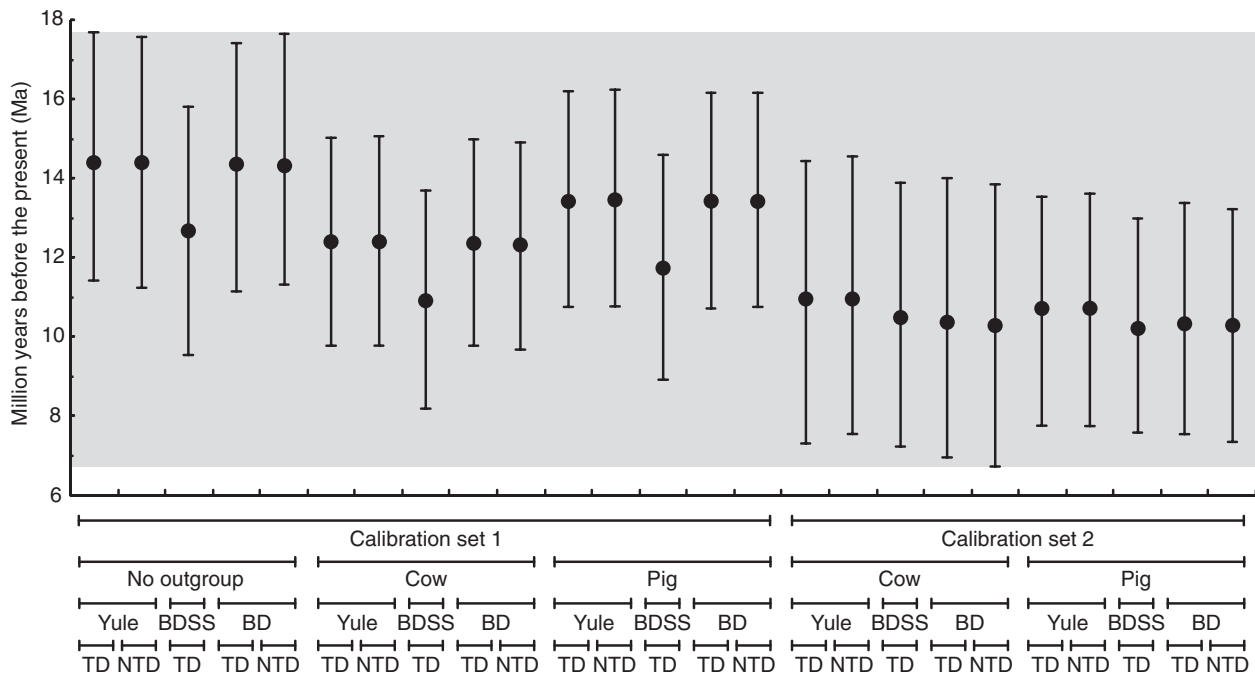


Fig. 4. *Camelops–Camelus* divergence estimates under various Bayesian model parameters (calibration set, outgroup, speciation model, and tip dating). Circles are mean height estimates and bars are 95% highest posterior density (HPD) credibility intervals. Gray background highlights the range of all 95% HPD credibility intervals (~ 17.5 – 7 Ma). BD, the birth–death speciation model; BDSS, the birth–death serially sampled speciation model; TD, tip dating enforced; NTD, tip dating not enforced.

species and are in broad agreement with the fossil record (Wheeler 1995).

To further test the *Camelops–Camelus* divergence estimate, we performed an additional analysis using the low coverage nuclear genome data. Assuming a genome-wide strict molecular clock, we inferred that these two lineages diverged between around 11 and 10 Ma (supplementary table S3, Supplementary Material online). This result is consistent with that derived from the mitogenomic data (fig. 4; supplementary table S2, Supplementary Material online).

Reconstructing the Evolutionary History of Camelidae

Both molecular and fossil record data suggest that crown group Camelidae arose in the late Early Miocene, around 17.5–16 Ma (supplementary fig. S1, Supplementary Material online; Honey et al. 1998; Hassanin et al. 2012; Wu et al. 2014). Our data support a subsequent divergence between the extant Old World camel (*Camelus*) lineage and the extinct *Camelops* clade prior to the late Late Miocene. This proposed divergence timing is consistent with hypotheses based on the fossil record that propose close affinities between Late Miocene *Paracamelus* and living *Camelus* (Titov 2008) and between Miocene *Alforjas* and *Camelops* (supplementary fig. S1, Supplementary Material online; Harrison 1979). *Paracamelus*, which is the presumed ancestor of living Old World camels, expanded from North America into Eurasia by approximately 7.5 to 6.5 Ma (Pickford et al. 1995). Eurasian *Paracamelus* later became separated from contemporaneous populations in arctic North America, probably as a result of the flooding of the Bering Isthmus approximately 5.5 Ma (Gladenkov et al. 2002). *Paracamelus* finally became extinct

in the North American Arctic and Subarctic by the middle Pleistocene, roughly 1 Ma (Rybczynski et al. 2013). Stratigraphic and radiocarbon evidence suggest that *Camelops* and *Paracamelus* did not coexist in arctic and subarctic North America (Zazula et al. 2011; Rybczynski et al. 2013).

The fossil record suggests that *Camelops* first appeared during the middle Pliocene (~ 4.0 to 3.2 Ma) in southern North America (Thompson and White 2004) and achieved its maximum range during the late Pleistocene, with a reconstructed distribution from Alaska to Central America (fig. 1; supplementary table S1, Supplementary Material online). Fossils of *C. hesternus* in the northern part of its distribution in eastern Beringia (unglaciated Alaska and Yukon; fig. 1i) are very rare (Harrington 1997), which may indicate either that populations were continuously present but always small or that *Camelops* dispersed into the subarctic only during brief interglacial intervals (Zazula et al. 2011). From a paleoecological standpoint, being able to distinguish between these alternatives is crucial, as the former implies a much greater capacity to withstand major climate change than does the latter.

Although *Camelops* was extinct throughout North America by roughly 13 ka (Waters et al. 2015), our nonfinite radiocarbon dates from Hunker Creek suggest that populations in eastern Beringia may have been locally extinct tens of millennia earlier, in parallel with the extinction chronology of American mastodon *Mammuth americanum* (Zazula et al. 2014). This pattern may also apply to other rare fossil taxa found in eastern Beringia, such as Jefferson's ground sloth (*Megalonyx jeffersonii*) and the giant beaver (*Castoroides*

ohioensis; Harington 1990). However, additional dated remains from these species will be necessary to test this hypothesis. A better understanding of the timing of local versus regional extinctions has implications for interpreting continuity and change in the North American biota, including understanding the timing and significance of anthropogenic factors in forcing megafaunal extinctions.

Materials and Methods

This section provides an overview of the methods of this study; full details can be found in the [supplementary information, Supplementary Material](#) online.

Radiocarbon Dating

To generate radiocarbon dates for the fossil *Camelops* specimens, we extracted approximately 150 mg of collagen from each bone using a combination of standard Longin (1971) methods and ultrafiltration (Beaumont et al. 2010). The prepared collagen was radiocarbon dated at the KECK Accelerator Mass Spectrometry (AMS) Laboratory (University of California, UC, Irvine).

DNA Extraction, Library Preparation, and Sequencing

We followed standard protocols for aDNA research, outlined in Cooper and Poinar (2000). In a purpose-built aDNA facility, we extracted DNA from 100 to 120 mg of bone powder following Dabney, Knapp, et al. (2013) and constructed DNA libraries following Meyer and Kircher (2010). We sequenced the libraries using the Illumina HiSeq-2500 platform at UCSF.

Mitogenomic Reconstruction and Phylogenetic Analysis

We combined the sequenced reads from all samples and sequencing runs and used these to reconstruct the *Camelops* mitochondrial genome. We merged, adapter trimmed, and mapped each read to four extant camelid reference mitogenomes using an iterative assembler (Green et al. 2008). We then combined the resulting alignments to produce a draft of the *Camelops* mitogenome. Independent remapping of reads from each sample to the draft mitogenome, as well as visual inspection, gene annotation, and assessment of DNA fragment length distributions and deamination patterns ([supplementary fig. S2, Supplementary Material](#) online), were all consistent with what is expected from authentic aDNA sequences.

We aligned the three Yukon *Camelops* mitogenomes to seven extant camelid and ten other artiodactyl mitochondrial genomes collected from GenBank ([supplementary table S4, Supplementary Material](#) online). We partitioned the alignments into four partitions: control region, coding regions, rRNAs, and tRNAs. We then used PartitionFinder (Lanfear et al. 2012) and jModelTest (Darriba et al. 2012) to identify the most suitable model of molecular evolution for each partition ([supplementary table S5, Supplementary Material](#) online). Assuming these models, we then ran Bayesian and maximum likelihood phylogenetic analyses in MrBayes (Ronquist et al. 2012) and RAxML (Stamatakis 2014),

respectively, to test for consistent camelid topologies under different combinations of three conditions: 1) including or excluding an outgroup taxon; 2) including or excluding the control region partition; and 3) using both a rate heterogeneity parameter (γ) and a proportion of invariant sites or using only the rate heterogeneity parameter.

Phylogenetic Inference from Nuclear Genomes

To assess the phylogenetic relationships among Yukon *Camelops* and extant species in the Camelini and Aucheniiini based on low coverage nuclear genomes, we calculated mean pairwise transversion differences between all pairs of *Camelops* specimens and the wild bactrian camel (Camelini) and alpaca (Aucheniiini) reference genomes. To test for mapping bias that might lead to underestimation of the divergence between *Camelops* and the reference genome, we mapped all *Camelops* shotgun reads to both the wild bactrian camel and alpaca reference genomes. To calculate the divergence between the reference genome sequences, we created artificial datasets in which short fragments mimicking Illumina sequencing reads were sampled from each of the two reference genomes. These artificial "reads" were then remapped to the alternate reference genome. In inferring pairwise distances between genomes, we restricted our analyses to transversions so as to prevent cytosine deamination from biasing analyses (Dabney, Meyer, et al. 2013).

Divergence Dating

We performed Bayesian estimation of the divergence time between *Camelops* and *Camelus* in BEAST (Drummond et al. 2012) using alignments of whole mitogenomes partitioned as above. Analyses were restricted to the camelids, except for variations that included a single outgroup. We ran BEAST analyses assuming different combinations of parameters: 1) calibration set, 2) the presence/absence of an outgroup, 3) assuming a yule, BD, or BD serially sampled speciation model; and 4) using an estimated age of each *Camelops* specimen (90 ± 40 ka) as prior information or not. We used two calibration sets. The first set assumed a divergence between the Camelini and Aucheniiini of 17.5 Ma, using a normal prior with a standard deviation of 1.52 Ma, so as to sample between 15 and 20 Ma with 90% probability, following Honey et al. (1998). The second set assumed a camelid-outgroup divergence of 59 Ma, using a lognormal prior with a log standard deviation of 0.07, so as to sample between 52.5 and 66 Ma with 90% probability, following Benton et al. (2015). The second calibration set also assumed a dromedary-bactrian camel divergence of 4.4 Ma, using a normal prior with a standard deviation of 1.43 Ma, so as to sample between 1.6 and 7.2 Ma with 95% probability, following Wu et al. (2014).

Finally, we further estimated the timing of divergence between *Camelops* and *Camelus* using the low coverage nuclear genome data aligned to the wild bactrian camel genome and assuming a genome-wide strict molecular clock. The divergence was calculated for each specimen by multiplying the Camelini–Aucheniiini split (17.5 Ma; Honey et al. 1998) by

the ratio of transversions between wild bactrian camel-*Camelops* and alpaca-*Camelops* (supplementary table S3, Supplementary Material online).

Supplementary Material

Supplementary information, figures S1–S4, tables S1–S5, and dataset S1 are available at *Molecular Biology and Evolution* online (<http://www.mbe.oxfordjournals.org/>).

Acknowledgments

We thank John Alton and other placer gold miners of the Klondike region for collecting fossils and providing access to study sites, as well as Duane Froese, Elizabeth Hall, and Susan Hewitson for their help in collecting, identifying, and archiving the remains studied here. John Southon and the KECK radiocarbon laboratory provided radiocarbon dates, Julie Meachen provided access to unpublished *Palaeolama* measurement data, Joaquin Arroyo-Cabrales provided data on Mexican localities of *Camelops*, Robert Calef assisted with the annotation of the mitochondrial genomes, and Lily Shiue assisted with the experimental work. We thank three anonymous reviewers for comments that improved the manuscript. This work was supported by grants from the Packard Foundation and the Gordon and Betty Moore Foundation. Fossil specimens YG 29.199, 328.21, and 328.23 are curated as part of the Government of Yukon Palaeontology Program's fossil collections in Whitehorse, Yukon. The three *Camelops* mitogenomes have been deposited in GenBank (accession numbers: KR822420–KR822422). Whole-genome shotgun nucleotide data have been deposited in the NCBI Short Read Archive (BioProject accession number: PRJNA284284).

References

- Beaumont W, Beverly R, Southon J, Taylor RE. 2010. Bone preparation at the KCCAMS laboratory. *Nucl Instrum Methods B*. 268:906–909.
- Bell CJ, Lundelius ELJ, Barnosky AD, Graham RW, Lindsay EH, Ruez DRJ, Semken HAJ, Webb SD, Zakrezewski RJ. 2004. The Blancan, Irvingtonian and Rancholabrean mammal ages. In: Woodburne MO, editor. Late Cretaceous and Cenozoic mammals of North America. Biostratigraphy and geochronology. New York: Columbia University Press. p. 232–314.
- Benton MJ, Donoghue PCJ, Asher RJ, Friedman M, Near TJ, Vinther J. 2015. Constraints on the timescale of animal evolutionary history. *Palaeontol Electron*. 18.1.1FC:1–106.
- Breyer J. 1974. Examination of selected postcranial elements in Pleistocene camelids. University of Wyoming Contributions to Geology. 13:75–85.
- Breyer JA. 1983. The biostratigraphic utility of camel metapodials. *J Paleontol*. 57:302–307.
- Campos PF, Sher A, Mead JL, Tikhonov A, Buckley M, Collins M, Willerslev E, Gilbert MTP. 2010. Clarification of the taxonomic relationship of the extant and extinct ovibovids, *Ovibos*, *Praeovibos*, *Euceratherium* and *Bootherium*. *Quat Sci Rev*. 29:2123–2130.
- Cooper A, Poinar HN. 2000. Ancient DNA: do it right or not at all. *Science* 289:1139.
- Dabney J, Knapp M, Glocke I, Gansauge MT, Weihmann A, Nickel B, Valdiosera C, Garcia N, Paabo S, Arsuaga JL, et al. 2013. Complete mitochondrial genome sequence of a Middle Pleistocene cave bear reconstructed from ultrashort DNA fragments. *Proc Natl Acad Sci U S A*. 110:15758–15763.
- Dabney J, Meyer M, Paabo S. 2013. Ancient DNA damage. *Cold Spring Harb Perspect Biol*. 5:1–7.
- Darriba D, Taboada GL, Doallo R, Posada D. 2012. jModelTest 2: more models, new heuristics and parallel computing. *Nat Methods*. 9:772.
- Drummond AJ, Suchard MA, Xie D, Rambaut A. 2012. Bayesian phylogenetics with BEAUti and the BEAST 1.7. *Mol Biol Evol*. 29:1969–1973.
- Ehlers J, Gibbard PL, Hughes PD. 2011. Quaternary glaciations—extent and chronology: a closer look. In: van der Meer JJM, editor. Developments in quaternary science. Heidelberg (Germany): Springer. p. 1–1108.
- Froese DG, Zazula GD, Westgate JT, Preece SJ, Sanborn PT, Reyes AV, Pearce NJG. 2009. The Klondike goldfields and Pleistocene environments of Beringia. *Geol Soc Am Today*. 19:4–10.
- Gladenkov AY, Oleinik AE, Marincovich L, Barinov KB. 2002. A refined age for the earliest opening of Bering Strait. *Palaeogeogr Palaeoclimatol Palaeoecol*. 183:321–328.
- Gradstein FM, Ogg JG, Schmitz MA, Ogg GM. 2012. A geologic time scale 2012. Oxford (United Kingdom): Elsevier.
- Graham RW, Lundelius EL Jr. 2010. FAUNMAP II: new data for North America with a temporal extension for the Blancan, Irvingtonian and early Rancholabrean. FAUNMAP II Database. Version 1.0 <http://www.ucmp.berkeley.edu/faunmap/>.
- Green RE, Malaspina AS, Krause J, Briggs AW, Johnson PL, Uhler C, Meyer M, Good JM, Maricic T, Stenzel U, et al. 2008. A complete Neandertal mitochondrial genome sequence determined by high-throughput sequencing. *Cell* 134:416–426.
- Grubb P. 2005. Order Artiodactyla. In: Wilson DE, Reeder DM, editors. Mammal species of the world: a taxonomic and geographic reference. Baltimore (MD): Johns Hopkins University Press. p. 637–722.
- Harington CR. 1990. Vertebrates of the Last Interglaciation in Canada—a review, with new data. *Geogr Phys Quat*. 44:375–387.
- Harington CR. 1997. Pleistocene vertebrates of Sixtymile, Yukon Territory: a preliminary discussion. In: Edwards ME, Sher AV, Guthrie RD, editors. Terrestrial Paleoenvironmental studies in Beringia. Fairbanks (AK): Alaska Quaternary Center, University of Alaska. p. 83–90.
- Harrison JA. 1979. Revision of the Camelinae (Artiodactyla, Tylopoda) and description of the new genus *Alforjas*. The University of Kansas Paleontological Contributions. 95:1–27.
- Harrison JA. 1985. Giant camels from the Cenozoic of North America. *Smithson Contrib Paleobiol*. 57:1–29.
- Hassanin A, Delsuc F, Ropiquet A, Hammer C, van Vuuren BJ, Matthee C, Ruiz-Garcia M, Catzeflis F, Areskoug V, Nguyen TT, et al. 2012. Pattern and timing of diversification of Cetartiodactyla (Mammalia, Laurasiatheria), as revealed by a comprehensive analysis of mitochondrial genomes. *C R Biol*. 335:32–50.
- Honey JG, Harrison JA, Prothero DR, Stevens MS. 1998. Camelidae. In: Janis CM, Scott KM, Jacobs LL, editors. Evolution of tertiary mammals of North America, volume 1: terrestrial carnivores, ungulates, and ungulatelike mammals. Cambridge (United Kingdom): Cambridge University Press. p. 439–462.
- Ji R, Cui P, Ding F, Geng J, Gao H, Zhang H, Yu J, Hu S, Meng H. 2009. Monophyletic origin of domestic bactrian camel (*Camelus bactrianus*) and its evolutionary relationship with the extant wild camel (*Camelus bactrianus ferus*). *Anim Genet*. 40:377–382.
- Kooyman B, Hills LV, Tolman S, McNeil P. 2012. Late Pleistocene western camel (*Camelops hesternus*) hunting in southwestern Canada. *Am Antiquity*. 77:115–124.
- Lanfear R, Calcott B, Ho SYW, Guindon S. 2012. PartitionFinder: combined selection of partitioning schemes and substitution models for phylogenetic analyses. *Mol Biol Evol*. 29:1695–1701.
- Lindahl T. 1993. Instability and decay of the primary structure of DNA. *Nature* 362:709–715.
- Lisiecki LE, Raymo ME. 2005. A Pliocene-Pleistocene stack of 57 globally distributed benthic delta O-18 records. *Paleoceanography* 20:PA1003.
- Lister AM, Edwards CJ, Nock DAW, Bunce M, van Pijlen IA, Bradley DG, Thomas MG, Barnes I. 2005. The phylogenetic position of the “giant deer” *Megaloceros giganteus*. *Nature* 438:850–853.
- Llamas B, Brotherton P, Mitchell KJ, Templeton JEL, Thomson VA, Metcalf JL, Armstrong KN, Kasper M, Richards SM, Camens AB,

- et al. 2015. Late Pleistocene Australian marsupial DNA clarifies the affinities of extinct megafaunal kangaroos and wallabies. *Mol Biol Evol.* 32:574–584.
- Longin R. 1971. New method of collagen extraction for radiocarbon dating. *Nature* 230:241–242.
- Meyer M, Kircher M. 2010. Illumina sequencing library preparation for highly multiplexed target capture and sequencing. *Cold Spring Harb Protoc.* 2010:pdb prot5448.
- Muhs DR, Ager TA, Beget JE. 2001. Vegetation and paleoclimate of the last interglacial period, central Alaska. *Quat Sci Rev.* 20:41–61.
- Orlando L, Ginolhac A, Zhang G, Froese D, Albrechtsen A, Stiller M, Schubert M, Cappellini E, Petersen B, Moltke I, et al. 2013. Recalibrating *Equus* evolution using the genome sequence of an early Middle Pleistocene horse. *Nature* 499:74–78.
- Orlando L, Leonard JA, Thenot A, Laudet V, Guerin C, Hanni C. 2003. Ancient DNA analysis reveals woolly rhino evolutionary relationships. *Mol Phylogenet Evol.* 28:485–499.
- Pickford M, Morales J, Soria D. 1995. Fossil camels from the Upper Miocene of Europe: implications for biogeography and faunal change. *Geobios* 28:641–650.
- Pinsol JD. 1998. The American falls local fauna: late Pleistocene (Sangamonian) vertebrates from southeastern Idaho. In: Akersten WA, McDonald HG, Meldrum DJ, Flint MET, editors. *And where-as... Papers on the vertebrate paleontology of Idaho honoring John A. White*, volume 1: Idaho Museum of Natural History Occasional Paper 36. p. 121–145.
- Prüfer K, Stenzel U, Hofreiter M, Paabo S, Kelso J, Green RE. 2010. Computational challenges in the analysis of ancient DNA. *Genome Biol.* 11:R47.
- Rohland N, Malaspina AS, Pollack JL, Slatkin M, Matheus P, Hofreiter M. 2007. Proboscidean mitogenomics: chronology and mode of elephant evolution using mastodon as outgroup. *PLoS Biol.* 5:1663–1671.
- Ronquist F, Teslenko M, van der Mark P, Ayres DL, Darling A, Höhna S, Larget B, Liu L, Suchard MA, Huelsenbeck JP. 2012. MrBayes 3.2: efficient Bayesian phylogenetic inference and model choice across a large model space. *Syst Biol.* 61:539–542.
- Rybczynski N, Gosse JC, Harington CR, Wogelius RA, Hidy AJ, Buckley M. 2013. Mid-Pliocene warm-period deposits in the high Arctic yield insight into camel evolution. *Nat Commun.* 4:1–9.
- Scherer CS. 2013. The Camelidae (Mammalia, Artiodactyla) from the quaternary of South America: cladistic and biogeographic hypotheses. *J Mamm Evol.* 20:45–56.
- Stamatakis A. 2014. RAxML version 8: a tool for phylogenetic analysis and post-analysis of large phylogenies. *Bioinformatics* 30:1312–1313.
- Thompson ME, White RSJ. 2004. Getting over the hump: Blancan records of *Camelops* from North America, with special reference to Hagerman, Idaho and the 111 Ranch, Arizona. Denver (CO): Geological Society of America.
- Titov VV. 2008. Habitat conditions for *Camelus knoblochi* and factors in its extinction. *Quat Int.* 179:120–125.
- Voorhies MR, Corner RG. 1986. *Megatylopus(?) cochrani* (Mammalia: Camelidae): a re-evaluation. *J Vertebr Paleontol.* 6:65–75.
- Waters MR, Stafford TW Jr, Kooyman B, Hills LV. 2015. Late Pleistocene horse and camel hunting at the southern margin of the ice-free corridor: reassessing the age of Wally's Beach, Canada. *Proc Natl Acad Sci U S A.* 112:4263–4267.
- Webb SD. 1965. The osteology of *Camelops*. *Bull Los Angeles Cty Museum.* 1:1–54.
- Webb SD, Meachen J. 2004. On the origin of lamine Camelidae including a new genus from the Late Miocene of the high plains. *Bull Carnegie Museum Nat Hist.* 36:349–362.
- Webb SD, Perrigo SC. 1984. Late Cenozoic vertebrates from Honduras and El Salvador. *J Vertebr Paleontol.* 4:237–254.
- Welker F, Collins MJ, Thomas JA, Wadswley M, Brace S, Cappellini E, Turvey ST, Reguero M, Gelfo JN, Kramarz A, et al. 2015. Ancient proteins resolve the evolutionary history of Darwin's South American ungulates. *Nature.* 522:81–84.
- Wheeler JC. 1995. Evolution and present situation of the South American Camelidae. *Biol J Linn Soc.* 54:271–295.
- Wu HG, Guang XM, Al-Fageeh MB, Cao JW, Pan SK, Zhou HM, Zhang L, Abutarboush MH, Xing YP, Xie ZY, et al. 2014. Camelid genomes reveal evolution and adaptation to desert environments. *Nat Commun.* 5:1–9.
- Zazula GD, MacPhee RD, Metcalfe JZ, Reyes AV, Brock F, Druckenmiller PS, Groves P, Harington CR, Hodgins GW, Kunz ML, et al. 2014. American mastodon extirpation in the Arctic and Subarctic predates human colonization and terminal Pleistocene climate change. *Proc Natl Acad Sci U S A.* 111:18460–18465.
- Zazula GD, Turner DG, Ward BC, Bond J. 2011. Last interglacial western camel (*Camelops hesternus*) from eastern Beringia. *Quat Sci Rev.* 30:2355–2360.